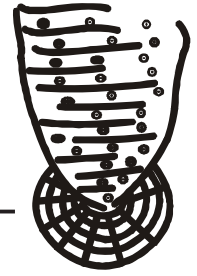
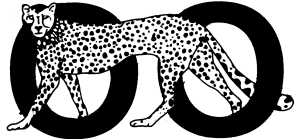


# ZOOS' PRINT



News of Zoo and Wildlife Networks in South Asia --  
Published by Zoo Outreach Organisation

ISSN 0971- 6378, ZOOS' PRINT, Volume XXIV, Number 7, July 2009 (RNI 10:10)

## Contents

All Zoos contributing to Conservation by Sally Walker, P. 1

IUCN Technical Guidelines on the Management of *Ex Situ* Populations for Conservation, Approved at the 14th Meeting of the Programme Committee of Council, Gland Switzerland, 10 Dec 2002, Pp. 2-3

Article about IUCN SSC ... Technical Guidelines on the Management of *Ex Situ* Populations for Conservation, Mike Maunder and Onnie Byers, (2004), *Oryx* 38: 342-346., Pp. 4-6

Internal communication and its magical effect by R. Hemanth Kumar, Pp. 7-9

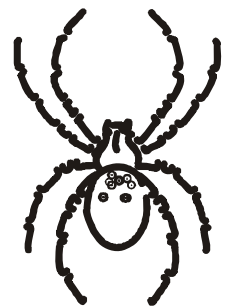
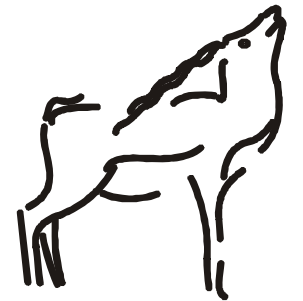
Challenging, interesting, vibrant, fulfilling . . . my three years in Kanpur Zoo by R. Hemanth Kumar, Pp. 10-12

Loss of biodiversity in the face of global warming by Thilina Surasinghe, Pp. 13-15

Some Short Notes on various species, Pp. 16-20

Education Reports, Pp. 21-25

Zoo Lex - Zoo Zürich Himalayas Exhibit for Siberian Tigers, Pp. 26-28



Zoo Outreach Organisation is grateful to the Universities Federation for Animal Welfare for their generous support of ZOOS' PRINT magazine.

UFAW

# ZOOS' PRINT PUBLICATION INFORMATION

**ZOOS' PRINT is Registered with the Registrar of Newspapers, No. 71908/99, Registered No. TN/CB/112, ISSN 0971-6378**

Published at: Coimbatore  
Publisher: Nandini Rangaswamy, Pioneer House, Peelamedu, CBE 4  
Printer: V.R. Sugumaar, 143B Nava India Road, Peelamedu, CBE 4  
Owner: Zoo Outreach Organisation, 9A Lal Bahadur Colony, Peelamedu, CBE 4  
Printed at: Vivegaa Offset Press, 143B Nava India Rd, Peelamedu, CBE 4

Editor: Sanjay Molur, GEM Colony, Ganpathy, CBE 4  
Editor Emeritus: Sally R. Walker, 9A Lal Bahadur Colony, Peelamedu, Peelamedu, CBE 4  
Associate Editor: Daniel B. Ayyachamy  
Managing Editor: Latha G. Ravikumar  
Circulation Manager: R. Pravin Kumar  
Editorial Assistant: R. Marimuthu  
Dispatch Technician: S. Sarojamma

## **Zoo Outreach Organisation Committee of Management and Sr. Staff**

President:	G. Rangaswamy
Vice-President:	D. Srinivasan
Secretary & Founder	S. Walker
Treasurer:	R. Nandini
Managing Comm.	J. V. Cheeran, P. Kumar, S. Paulraj, V. Rudrappa, L.A.K. Singh, A. Venkatesan
Director :	Sally R. Walker
Deputy Director:	S. Molur
Scientist:	B. A. Daniel
Financial Director/ Manager:	Latha G. Ravikumar
Researcher:	R. Marimuthu

ZOOS' PRINT is a magazine and intended to be informal and newsy as opposed to a scientific publication. ZOOS' PRINT magazine sometimes includes semi-scientific and technical articles are reviewed only for factual errors and are not peer-reviewed. Guidelines for submission of articles for ZP magazine are included in the next column. ZOOS' PRINT JOURNAL is no longer published in this name; it is now titled Journal of Threatened Taxa (online) and has international as opposed to regional scope. It can be viewed at [www.threatenedtaxa.org](http://www.threatenedtaxa.org).

ZOOS' PRINT magazine is available on subscription for Rs.250/- per year (add Rs.50/- for outstation cheques). The fee for membership in Zoo Outreach Organisation (also Rs. 250/-) includes a one-year subscription to ZOOS' PRINT and a membership card.

We welcome members who will agree to support zoos and captive breeding centres in a positive and constructive manner only. Members may be called upon to assist with educational and information gathering activities in their area.

## **GUIDELINES for ZOOS' PRINT MAGAZINE CONTRIBUTORS**

We welcome articles from the conservation community of all SAARC countries, including Afghanistan, Bangladesh, Bhutan, India, Maldives, Nepal, Pakistan, Sri Lanka. Articles from other tropical countries will also be considered if relevant to SAARC countries' problems and potential.

**Type** — Articles of semi-scientific or technical nature. News, notes, announcements of interest to conservation community are acceptable. Personal opinion pieces are also welcome.

**Feature articles** — articles of a conjectural nature — opinions, theoretical, subjective.

**Case report** — case study or notes — short factual reports and descriptions.

**News and announcements** — short items of news or announcements of interest to zoo and wildlife community

## **Cartoons, puzzles, crossword and stories**

**Subject matter** : captive breeding, (wild) animal husbandry and management, wildlife management, field notes, conservation biology, population dynamics, population genetics, conservation education and interpretation, wild animal welfare, conservation of flora, natural history and history of zoos. Articles on rare breeds of domestic animals are also considered.

**Source** : Institutions such as zoos, breeding facilities, holding facilities, rescue centres, research institutes, wildlife departments, wildlife protected areas, bioparks, conservation centres, botanic gardens, museums, universities, etc. Also persons who are interested in conservation and have information and opinions to share can do so in ZOOS' PRINT magazine if their matter is considered useful and non-objectionable.

## **Manuscript requirements:**

Articles should be typed with double spacing on one side of paper with generous margins.

Articles can include relevant photographs, illustrations, tables, etc. wherever necessary or desirable but photographs will not normally be used in the printed version. We will include them in the web version.

Articles which should contain citations should follow this guideline : a bibliography organized alphabetically and containing all details referred in the following style : surname, initial(s), year, title of the article, name of journal, volume, number, pages.

## **Editorial details :**

Articles will be edited without consultation unless previously requested by the authors in writing. Authors should inform editors if the article has been published or submitted elsewhere for publication.

All articles will be reviewed by in-house group editors and those categorised as scientific, also by consultant editors.

Contact address: **Zoo Outreach Organisation**  
Post Box 1683, Peelamedu  
Coimbatore, Tamil Nadu 641 004, India  
Phone: +91 422 2561087  
Fax: +91 422 2563269  
E-mail: [zooreach@zooreach.org](mailto:zooreach@zooreach.org)

# Asian Zoo Educators' Conference

**11-16 October 2009**

**Saving the melting earth with limited resources but immense ideas**

## INTRODUCTION

Nowadays, zoos should not only provide entertainment, but also edutainment for visitors. Zoo is the best place to convey animal information and conservation message in the city. People can surely enjoy learning in zoo through education programme. To enrich and improve education programme in zoo, sharing is the key element. Asian Zoo Educators' Conference serves as the best platform for zoo educators to exchange, learn and expose ideas from different parts of Asia.

The second Asian Zoo Educators' Conference will be held at Ocean Park Hong Kong from 11-16 October 2009. "Saving the melting earth with limited resources but immense ideas" will be the theme of this conference. Register now and share your great ideas with us!

## CALL FOR PAPERS

You are invited to present and share your research or experience with us. You are welcome to submit papers, videos, posters or plan for a workshop according to the conference theme. English will be the main language for this conference. For presentations and papers in other language, please contact us for further assistance.

## FOR FURTHER INFORMATION

Please visit our conference website at [www.oceanpark.com.hk/azec2009](http://www.oceanpark.com.hk/azec2009) for updated information. You are welcome to call (852) 39232602 or email us at [azec2009@oceanpark.com.hk](mailto:azec2009@oceanpark.com.hk)

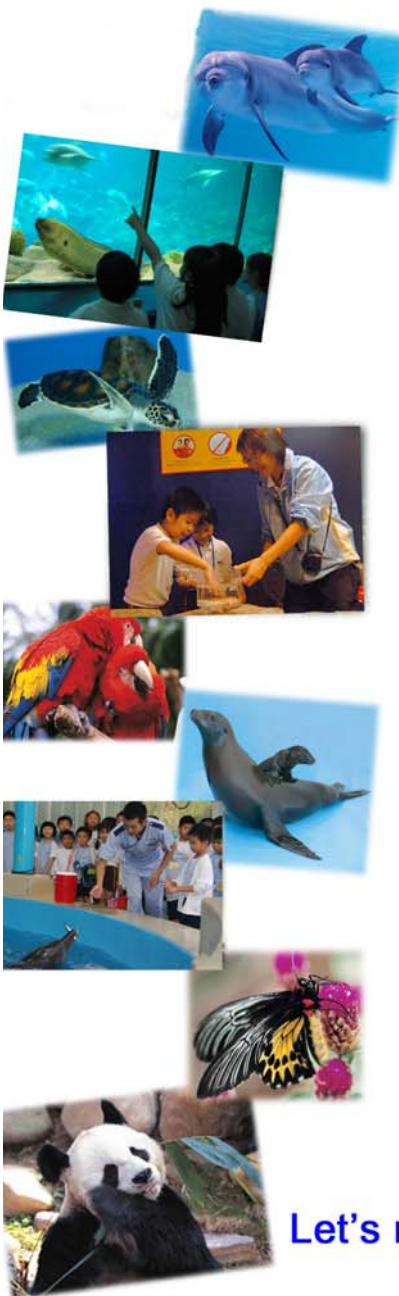
## DATES TO REMEMBER

Presentation Registration: March-June 2009  
Early Bird Registration: Before 30 June 2009  
Standard Registration: Before 30 August 2009  
Sponsorships: Before 30 June 2009

## CANCELLATION

Should there be insufficient applicants, Ocean Park Hong Kong will consider cancelling this conference. We will inform registered attendees by email no later than 10 July 2009. Please reserve accommodation and flight after receiving confirmation from us.

**Let's meet at Ocean Park Hong Kong in October 2009!**



### Order form for CBSG, India Briefing Books/Reports

Name of the Reports	No. of pages	Cost (incl. Postage)	Please tick here
<b>PHVA Briefing Books</b>			
1. Manipur brow-antlered deer ( <i>Cervus eldi eldi</i> ) (1992) Part I & II	384	Rs. 900	1
2. Lion-tailed macaque ( <i>Macaca silenus</i> ) (1993) Part I & II	401	Rs. 900	2
3. Asiatic lion ( <i>Panthera leo persica</i> ) (1993)	319	Rs. 625	3
4. Great Indian One-horned Rhinoceros ( <i>Rhinoceros unicornis</i> ) (1993)	305	Rs. 600	4
5. Indian Gharial ( <i>Gavialis gangeticus</i> ) (1993)	215	Rs. 450	5
6. Barasingha - Swamp deer ( <i>Cervus duvauceli</i> ) (1995)	356	Rs. 675	6
<b>PHVA Reports</b>			
7. Manipur brow-antlered deer ( <i>Cervus eldi eldi</i> ) (1994)	80	Rs. 275	7
8. Lion-tailed macaque ( <i>Macaca silenus</i> ) (1995)	106	Rs. 325	8
9. Asiatic lion ( <i>Panthera leo persica</i> ) (1995)	117	Rs. 350	9
10. Indian Gharial ( <i>Gavialis gangeticus</i> ) (1995)	108	Rs. 325	10
11. Barasingha - Swamp deer ( <i>Cervus duvauceli</i> ) (1995)	120	Rs. 350	11
12. Great Indian One-horned Rhinoceros ( <i>Rhinoceros unicornis</i> ) (1995)	114	Rs. 350	12
13. Conservation of Western Hoolock Gibbon ( <i>Hoolock hoolock hoolock</i> ) in India and Bangladesh (2005)	132	Rs. 500	13
<b>CAMP Briefing Books</b>			
14. Planning Session for Workshop in Plant Conservation Status (1994)	125	Rs. 325	14
15. CAMP for Selected Species of Medicinal Plants of Southern Indian – I (1995)	185	Rs. 425	15
16. CAMP for Selected Species of Medicinal Plants of Southern Indian – II (1996)	198	Rs. 450	16
17. CAMP for Selected Species of Medicinal Plants of Southern Indian – III (1997)	115	Rs. 325	17
18. CAMP for Selected Medicinal Plants of Northern, Northeastern and Central Indian (1997)	115	Rs. 300	18
19. CAMP for Selected Soil Invertebrates of Southern India (1997)	178	Rs. 400	19
20. CAMP for Amphibians of India (1997)	205	Rs. 425	20
21. CAMP for Reptiles of India (1997)	91	Rs. 300	21
22. CAMP for Mammals of India (1997)	183	Rs. 400	22
23. CAMP for Mangroves of India (1997)	197	Rs. 425	23
24. CAMP for Freshwater Fishes of India (1997)	180	Rs. 400	24
<b>CAMP Reports</b>			
25. CAMP for Selected species of Medicinal Plants of Southern India (1, 2 & 3)	350	Rs. 800	25
26. CAMP for Selected Medicinal Plants of Northern, Northeastern and Central Indian (1998)	64	Rs. 225	26
27. CAMP for Selected Soil Invertebrates of Southern India (1998)	72	Rs. 250	27
28. CAMP for Amphibians of India (1998)	104	Rs. 325	28
29. CAMP for Reptiles of India (1998)	177	Rs. 425	29
30. CAMP for Mammals of India (1998)	178	Rs. 375	30
31. CAMP for Mangroves of India (1998)	108	Rs. 325	31
32. CAMP for Freshwater Fishes of India (1998)	158	Rs. 375	32
33. CAMP for Non-timber Forest Products of Madhya Pradesh (1998)	105	Rs. 225	33
34. CAMP for Amphibians and selected taxa of Reptiles of Sri Lanka (2000)	237	Rs. 400	34
35. CAMP for Non-timber forest products of Nilgiri biosphere reserve (2001)	107	Rs. 225	35
36. CAMP for Endemic Orchids of the Western Ghats (2001)	187	Rs. 250	36
37. CAMP for Status of South Asian Chiroptera including a CD Rom (2002)	151	Rs. 350	37
38. CAMP for Status and Red List of Pakistan's Mammals (2003)	309	Rs. 525	38
39. CAMP for Status of South Asian Primates (2003)	432	Rs. 750	39
40. CAMP for Status of South Asian Non-volant Small Mammals (2005)	618	Rs. 1000	40

Name: \_\_\_\_\_

Address: \_\_\_\_\_  
 \_\_\_\_\_  
 \_\_\_\_\_

Date: \_\_\_\_\_

Signature: \_\_\_\_\_

Send Cheque/MO/DD, etc. to:

ZOO OUTREACH ORGANISATION  
 PB. 1683, Peelamedu, Coimbatore 641 004, Tamil Nadu, India  
 If you paying by out-station Cheque add Rs.50/-

Details of Cheque/ DD Amount Rs. \_\_\_\_\_

Cheque /DD No. \_\_\_\_\_ Bank \_\_\_\_\_

Details of M.O. \_\_\_\_\_