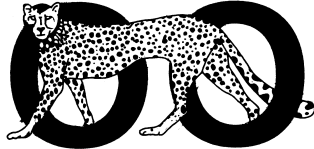


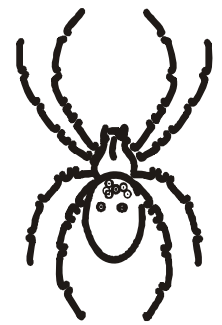
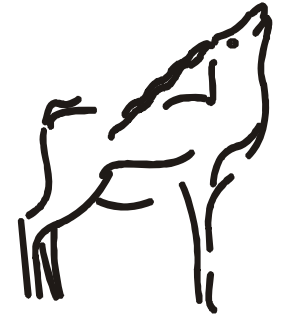
ZOOS' PRINT




News of Zoo and Wildlife Networks in South Asia --
Published by Zoo Outreach Organisation

ISSN 0971- 6378, ZOOS' PRINT, Volume XXIV, Number 4, April 2009 (RNI 10:7)



Contents





News of Zoo and Wildlife Networks in South Asia --
Published by Zoo Outreach Organisation

ZOOS' PRINT Magazine is
generously subsidised by the
Universities Federation for Animal
Welfare (UFAW), U.K.

ZOOS' PRINT PUBLICATION INFORMATION

ADMINISTRATIVE AND SUBSCRIPTION INFORMATION

ZOOS' PRINT is Registered with the Registrar of Newspapers, No. 71908/99, Registered No. TN/CB/112, ISSN 0971-6378

Published at: Coimbatore
Publisher: Nandini Rangaswamy, Pioneer House, Peelamedu, CBE 4
Printer: V.R. Sugumaar, 143B Nava India Road, Peelamedu, CBE 4
Owner: Zoo Outreach Organisation, 29/1 Bharathi Cly, Peelamedu, CBE 4
Printed at: Vivegaa Offset Press, 143B Nava India Rd, Peelamedu, CBE 4

Editor: Sanjay Molur, 29/1 Bharathi Colony, Peelamedu, CBE 4
Editor Emeritus: Sally Walker, 29/1 Bharathi Colony, Peelamedu, CBE 4
Associate Editor: Daniel B. Ayyachamy
Managing Editor: Latha G. Ravikumar
Circulation Manager: R. Pravin Kumar
Editorial Assistant: B. Ravichandran
Dispatch Technician: S. Sarojamma

Zoo Outreach Organisation Committee of Management and Sr. Staff

President:	G. Rangaswamy
Vice-President:	D. Srinivasan
Secretary & Founder	S. Walker
Treasurer:	R. Nandini
Managing Comm.	J. V. Cheeran, P. Kumar, S. Paulraj, V. Rudrappa, L.A.K. Singh, A. Venkatesan
Deputy Director:	S. Molur
Scientist:	B. A. Daniel
Financial Officer/ Manager:	Latha G. Ravikumar

ZOOS' PRINT is informal, popular and will includes semi-scientific articles reviewed only for factual errors and not peer-reviewed. The type-style is variable and the format is issue based. Guidelines for submission of articles for ZP is included in the next column. ZOOS' PRINT JOURNAL is no longer published. This is now changed into Journal of Threatened Taxa which will be launched soon online at www.threatenedtaxa.org

ZOOS' PRINT is available on subscription for Rs.200/- per year (add Rs.50/- for outstation cheques). The fee for membership in Zoo Outreach Organisation (also Rs. 200/-) includes a one-year subscription to ZOOS' PRINT and a membership card.

We welcome members who will agree to support zoos and captive breeding centres in a positive and constructive manner only. Members may be called upon to assist with educational and information gathering activities in their area.

Applicants for Membership in any category must sign a pledge resolving to support zoos in a positive and constructive manner and to abide by the wildlife laws of this and other national and international conventions.

GUIDELINES for ZOOS' PRINT MAGAZINE CONTRIBUTORS

We welcome articles from the conservation community of India and SAARC countries. Articles from other tropical countries will also be considered if relevant to Indian and SAARC countries problems and potential. Articles having implications for intensive management of small, wild, populations are particularly welcome.

Type : Articles of semi-scientific or scientific / technical nature. News, notes, announcements of interest to conservation community are acceptable.

Feature articles — articles of a conjectural nature — opinions, theoretical, subjective.

Case report; case study or notes — short factual reports and descriptions.

News and announcements — short items of news or announcements of interest to zoo and wildlife community

Cartoons, puzzles, crossword and stories

Subject matter : captive breeding, (wild) animal husbandry and management, wildlife management, field notes, conservation biology, population dynamics, population genetics, conservation education and interpretation, wild animal welfare, conservation of flora, natural history and history of zoos. Articles on rare breeds of domestic animals are also considered.

Source : Institutions such as zoos, breeding facilities, holding facilities, rescue centres, research institutes, wildlife departments, wildlife protected areas, bioparks, conservation centres, botanic gardens, museums, universities, etc.

Manuscript requirements:

Articles should be typed with double spacing on one side of paper with generous margins.

Articles should include relevant photographs, illustrations, tables, etc. wherever necessary or desirable.

Articles should contain citations to be included in a bibliography alphabetically and contain all details referred in the following style : surname, initial(s), year, title of the article, name of journal, volume, number, pages.

Editorial details :

Articles will be edited without consultation unless previously requested by the authors in writing. Authors should inform editors if the article has been published or submitted elsewhere for publication.

All articles will be reviewed by in-house group editors and those categorised as scientific, also by consultant editors.

Write to: **Zoo Outreach Organisation**
Post Box 1683, Peelamedu
Coimbatore, Tamil Nadu 641 004, India
Phone: +91 422 2561087
Fax: +91 422 2563269
E-mail: zooreach@zooreach.org

Review of CBSG South Asia, RSG South Asia Annual Meeting 2009



Bucorvus cafer

*How CBSG,
South Asia works holistically for Hoolock Gibbon*

Vulture conservation and the vulture crisis
Small mammals reintroduction
Amphibian reintroduction and strategy
Strategy for small forest fragments
Management of excess population in zoos
Human/elephant conflict
Translocation as a solution for problematic animals
Training and interpretation needs for zoos
Signage
Animal exchange
Site selection for reintroduction
Global climate change and its impact

in situ

in situ *ex situ*

Activities of the IUCN SSC Conservation Breeding Specialist Group - 2008

ex situ

ex situ

in situ

Task II: Participant Introductions and Agenda Construction

Task III: Issue Generation and Prioritization

Task IV: Issue Elaboration and Objective Identification

why

Zoos & Aquariums empower IUCN SSC

huge

Task V: Action Identification and Prioritization

Working Agreement

Working Group Ground rules

Task I: Assign Working Group Roles
Assign these roles at the start of each working group session

Facilitator

Recorder

Timekeeper

Presenter

Working group reports



CBSG RSG Working Group Reports

Small Mammal Reintroduction Working Group

2. Rehabilitation

3. Conflict translocation

1. Conservation Breeding

4. Rescue translocations from habitat destruction

Primary Conflicts

Secondary Conflicts

The group then discussed the actions required to progress the issue and developed a list of priority actions to be completed:

Prioritization of Issues relevant to Human-animal conflicts

Issue	No votes	Rank
Crop damage	10	2
Damage to human properties and habituations	5	3
Killing / injuring & harassing humans & vice versa	11	1
Zoonotics	0	4

Conflict Resolution for three major prioritized issues

Animals	Issue	Solution
Elephants	Killing / injuring humans by animals	Create corridors, improvement of habitats, awareness on prevention and avoidance, domestication, culling. Translocation is not recommended
	Killing / injuring animals by humans	Awareness Legislation
Big cats & Sloth Bear	Killing / injuring humans by animals	Keeping in captivity, declare more reservations, culling, Translocation is not recommended
	Killing / injuring animals by humans	Legislation, Relocation of villagers, Awareness
Crocodiles	Killing / injuring humans by animals	Fencing bathing & washing area, Awareness
	Killing / injuring animals by humans	Awareness Legislation
Primates	Crop damage	Best practices for crop protection, Selection of non-palatable crop species, Increase in food plants in natural habitats (non-conflict oriented), awareness, garbage management, netting, fencing, crackers, sounds, harvesting early.
Elephants, Monkeys & Bats	Damage to human property and habitation	Fencing (natural & artificial) around parks and villages, repellents, using proper construction material for houses, Provision of alternative routes (ladders for monkeys) and roosts (for bats)
Snakes	Killing / injuring humans by animals	Improvement of habitats, Awareness on prevention and avoidance, translocation
	Killing / injuring animals by humans	Awareness, legislation

Human-Animal Conflict Working Group

Conflict-making animals in different regions

Animals	Region within South Asia
Elephant	Whole region
Rhino	India, Nepal
Primates - Macaques	Whole region
Large Carnivores - Leopard, Tiger, Sloth Bear	India, Bangladesh, Nepal, & Sri Lanka (except tiger)
Wild boar	India, Nepal & Sri Lanka
Crocodile	Parts of India & Sri Lanka
Small mammals	Sri Lanka, India & Nepal
Ungulates - Deer	Nepal, India & Sri Lanka
Fruit Bats	India, Bangladesh, Sri Lanka
Snakes	Whole Region

Limitations

Global Climate Change and its Impact on Habitat & Species

Working Group Members:

The group discussed and listed the following factors as having impact on Habitat

Working Group Members made the following Commitments :

· Bhatta:

· Shahriar and Shafiqur:

· Rabbani:

· Sahu:

· Bahir:

· Daniel:

The group discussed and listed the following factors as having impact on Species

· Thasun Amarasinghe:

· Dinesh:

· M. Chowdhury:

The Working Group listed recommendations on how to address the issue :

How CBSG, South Asia works holistically for Hoolock Gibbon,

Sally Walker

Reprinted from CBSG / RSG Joint Newsletter 2009



Read more about these exciting workshops and their potential for conservation of Hoolock Gibbon in the following pages of a Draft Report.

Case Study in NE India -- salvaging small wild populations while strengthening others of a highly threatened species

*Proposed use of Wild to Wild Rapid Translocation with specific reference to Hoolock Gibbons in minute populations and habitat fragments, by Sally Walker and Sanjay Molur**



"deliberate and mediated movement of wild individuals or populations from one part of their range to another."

ad hoc,

* Sanjay Molur and Sally Walker, Co-Chairs RSG, South Asia of the IUCN SSC Reintroduction Specialist Group

Background



The Translocation of the Golden Lion Tamarin

	Results of Evaluation to reintroduce/translocate (Kleiman 1992) Condition of the Species
Processing and re-capture	
	Environmental Condition
Results	Biopolitical Condition
	Biological and Other Resources
	First steps
Why we think Success !!	
	<i>Leontopithecus</i>
Factors and/or procedures which increase the success of translocations	

DRAFT Recommendations: Wild to Wild Rapid Translocation Training for Conservation Potential of Hoolock Gibbon

(Combined from Sept 2008 and Jan 2009 workshops)

Objectives and Principles

Subject

Over-riding purpose

Conclusion

Recommendations by participants

It is recommended that :

Hoolock leuconedys

Hoolock hoolock



DRAFT Report of Plenary Working Group discussion, 29 January 2009: Requirements for successful conduct of Wild to Wild Rapid Translocations for Future Conservation Potential for Hoolock Gibbon

Contents

Discussion

1. GIS

c. Priority setting and plan requirement

d. Comprehensive survey format

e. Surveys of isolated populations

f. Surveys for long term comparison

g. Survey for Identification of potential release sites –

2. Survey

h. Another Population and Habitat Viability Assessment Workshop (PHVA)

a. A common survey protocol

3. Capacity Building Programme for translocation of Hoolock Gibbon

b. Minimum requirement - Presence/absence

a. Orientation on wild to wild rapid translocation

Definition of Terms : "Translocation": deliberate and mediated movement of wild individuals or populations from one part of their range to the other. (from IUCN Guidelines for Reintroductions, IUCN SSC Reintroduction Specialist Group, 1998)

a. Three demonstration or trial sites

b. Identification of stakeholders.

c. Public Information

i. Involvement of Media

b. Census methodology

c. Capacity building principles

d. Equipment required for translocation exercise

ii. Education and awareness

4. List of equipment

5. Genetic study – Arunachal Pradesh

Hoolock leuconedys

Hoolock hoolock

iii. Political support

et al

Hoolock leuconedys, reside in the state of Arunachal Pradesh in India. In view of this, care should be taken there should be no mixing of species under any circumstances.

6. Trial Translocations

Priorities for Translocation of Hoolock Gibbons *Statewise*

iv. Other ways to spread the word

d. Action Items for Trial Translocations

Next steps

Hoolock hoolock
Hoolock Leuconydes

•

•

•

7. Central Database – WADWT ; Live interactive website

Considerations in releasing animals – some IUCN fundamentals

Mike Jordan , IUCN SSC Reintroduction Specialist Group

don't

Types of conservation release - definitions :

When to consider introduction?

situ *in situ* *ex*

When to consider reintroduction?

When to consider translocation ?

field needs *captive conditions*

Considerations in Reintroduction & Reinforcement

When to consider reinforcement/ supplementation ?

Consideration of site and habitat issues

·
·
·

The complexity of Release
Reintroduction and Restocking require the
following values and actions :

Consideration of release issues

Consideration of legal and social issues

from Reintroduction SG guidelines

Attendees of CBSG RSG South Asia Meeting

Bangladesh

Sri Lanka

India

Nepal

Pakistan

United Kingdom

ZooLex *News & design from January issue*

<http://www.zoolex.org/zoolexcgi/view.py?id=881>

NEW EXHIBIT PRESENTATION

ANIMALS:

Family:	Species:	Common Name:	Capacity:
Adrianichthyidae	<i>Oryzias latipes</i>	Medaka	
Cyprinidae	<i>Puntius conchoni</i>	Rosy Barb	
Cyprinidae	<i>Tanichthys albonubes</i>	White Cloud Mountain Minnow	
Felidae	<i>Prionailurus viverrinus</i>	Fishing Cat	1,1,young

AWARDS:

ZOOLEX EDITORS

DESCRIPTION:

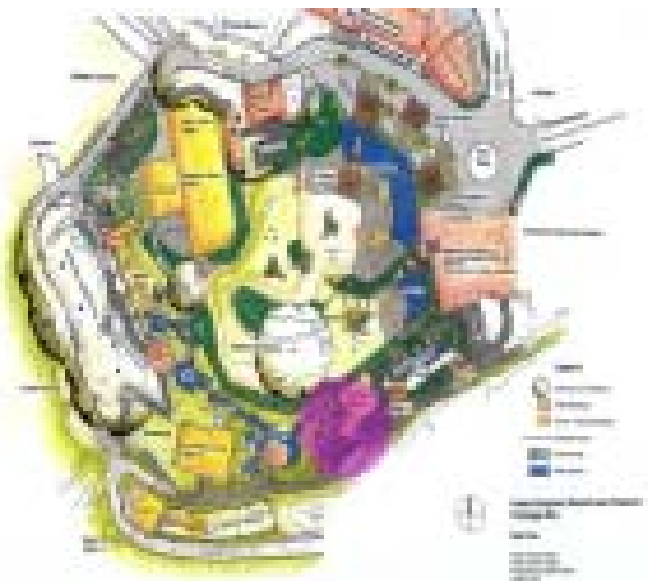
~°V°~ ~°V°~ ~°V°~ ~°V°~ ~°V°~ ~°V°~ ~°V°~ ~°V°~ ~°V°~

**Taronga Conservation
Society Australia
Wild Asia's Fishing Cat**



LOCATION:

KEY WORDS:



Site Plan - The fishing cat exhibit is marked in pink.
©Taronga Conservation Society Australia, 2003



Fishing Cat. ©Helen Pantenburg, 2007

DESIGN:

CONSTRUCTION:

PLANTS:



Diverse environment - The exhibit provides various types of substrate, plants and rest places on different heights. ©Monika Fiby, 2007

SIZE:

FEATURES DEDICATED TO ANIMALS:

Space allocation in square meters:

use	indoors		outdoors		total exhibit
	accessible	total	accessible	total	
animals	25		60	60	85
visitors			25	25	25
others	25				25
total	50	50	84	84	135

FEATURES DEDICATED TO KEEPERS:

COSTS:

OPENING DATE:



Visitor approach. ©Monika Fiby, 2007

RESEARCH:

CONSERVATION:

FEATURES DEDICATED TO VISITORS:

LOCAL RESOURCES:

INTERPRETATION:

MANAGEMENT:



Lower pond - The water of the pond in front of the first viewing hide is recirculated after running into a lower pond. ©Monika Fiby, 2007

Report on Completion of Getting Along with Elephants HECx workshop - West Bengal

Subhatirtha Karmakar*

**Member, Nature & Trekkers Club of Jalpaiguri,
Loknath Complex, Babupara, Jalpaiguri, 735101
subhatirthakarmakar@yahoo.com*

Education Reports from SAN-IZE on Wildlife Week, Animal Welfare Fortnightly and other events

Christmas special half day camps by MCBT

Rakhi

*Zoo Outreach Organization
Rakhi*

Rakhi

Zoo outreach organization

**Submitted by: Akanksha Mukherjee,
Education Officer, Madras Crocodile Bank Trust,
Tamil Nadu. Email: education.mcbt@gmail.com**

Education programme for kids at Kolhapur

**Submitted by: Kishor Maruti Malekar,
Kolhapur, Maharashtra. Email:
<captrohit@sancharnet.in>**

**Rachana Eco-Club's workshop on "In the world
of amphibians"**

Animal Welfare fortnight at MCBT

Rakhi

Rakhi

World Wetlands Day 2009-Report

*Reported by Mrs. Vaishali Kulkarni
(Agnihotri), Sharanpur, Nashik-422002, Maharashtra.
Email: unawanehemant@gmail.com*

Wildlife SOS-New Delhi education programmes

*Submitted by: Karishma Handa, Wildlife SOS, New
Delhi. Email: karishma@wildlifesos.org*

**Pitchandikulam Forest Consultants-Adyar
Poonga Animal Welfare Fortnight 2009-Report**

*Sub. by: Cyril Rufus.K, Env Education
Coordinator, PFC, Adyar Poonga, Chennai. Email:
cyril4112@yahoo.co.in*

Animal Welfare Fortnight 2009 at Calicut, Kerala

**Submitted by Dr. Ravi Kumar
Singh, Curator, Indira Gandhi Park Zoo & Deer Park,
SAIL, Rourkela, Orissa. Email:
ravi_dei@rediffmail.com**

COUNTDOWN 2010-Report

**Sub. by Vinod Kumar Damodar, Jt Secty, Conservation
of Nature Society, Calicut, Kerala. Email:
<sagarclt@rediffmail.com>**

rakhi

**Animal Welfare Fortnight Celebration at Indira
Gandhi Zoo, Rourkela, Orissa**

**Jessie Jeyakaran, Virugambakkam,
Chennai. Email: jessiejey@rediffmail.com**



V WORLD CONFERENCE OF MOUNTAIN UNGULATES
V CONGRESO MUNDIAL DE UNGULADOS DE MONTAÑA

-
-
-
-

ecretary@vworldconferenceungulates.org

PAPERS

•

First African Symposium on Zoological Medicine
18th-19th July 2009, Anglo Gold Conference Centre, The Johannesburg Zoo



-
-

-
-
-
-
-
-
-
-
-
-

Order form for CBSG, India Briefing Books/Reports

Name of the Reports	No. of pages	Cost (incl. Postage)	Please tick here
PHVA Briefing Books			
1. Manipur brow-antlered deer (<i>Cervus eldi eldi</i>) (1992) Part I & II	384	Rs. 900	1
2. Lion-tailed macaque (<i>Macaca silenus</i>) (1993) Part I & II	401	Rs. 900	2
3. Asiatic lion (<i>Panthera leo persica</i>) (1993)	319	Rs. 625	3
4. Great Indian One-horned Rhinoceros (<i>Rhinoceros unicornis</i>) (1993)	305	Rs. 600	4
5. Indian Gharial (<i>Gavialis gangeticus</i>) (1993)	215	Rs. 450	5
6. Barasingha - Swamp deer (<i>Cervus duvauceli</i>) (1995)	356	Rs. 675	6
PHVA Reports			
7. Manipur brow-antlered deer (<i>Cervus eldi eldi</i>) (1994)	80	Rs. 275	7
8. Lion-tailed macaque (<i>Macaca silenus</i>) (1995)	106	Rs. 325	8
9. Asiatic lion (<i>Panthera leo persica</i>) (1995)	117	Rs. 350	9
10. Indian Gharial (<i>Gavialis gangeticus</i>) (1995)	108	Rs. 325	10
11. Barasingha - Swamp deer (<i>Cervus duvauceli</i>) (1995)	120	Rs. 350	11
12. Great Indian One-horned Rhinoceros (<i>Rhinoceros unicornis</i>) (1995)	114	Rs. 350	12
13. Conservation of Western Hoolock Gibbon (<i>Hoolock hoolock hoolock</i>) in India and Bangladesh (2005)	132	Rs. 500	13
CAMP Briefing Books			
14. Planning Session for Workshop in Plant Conservation Status (1994)	125	Rs. 325	14
15. CAMP for Selected Species of Medicinal Plants of Southern Indian – I (1995)	185	Rs. 425	15
16. CAMP for Selected Species of Medicinal Plants of Southern Indian – II (1996)	198	Rs. 450	16
17. CAMP for Selected Species of Medicinal Plants of Southern Indian – III (1997)	115	Rs. 325	17
18. CAMP for Selected Medicinal Plants of Northern, Northeastern and Central Indian (1997)	115	Rs. 300	18
19. CAMP for Selected Soil Invertebrates of Southern India (1997)	178	Rs. 400	19
20. CAMP for Amphibians of India (1997)	205	Rs. 425	20
21. CAMP for Reptiles of India (1997)	91	Rs. 300	21
22. CAMP for Mammals of India (1997)	183	Rs. 400	22
23. CAMP for Mangroves of India (1997)	197	Rs. 425	23
24. CAMP for Freshwater Fishes of India (1997)	180	Rs. 400	24
CAMP Reports			
25. CAMP for Selected species of Medicinal Plants of Southern India (1, 2 & 3)	350	Rs. 800	25
26. CAMP for Selected Medicinal Plants of Northern, Northeastern and Central Indian (1998)	64	Rs. 225	26
27. CAMP for Selected Soil Invertebrates of Southern India (1998)	72	Rs. 250	27
28. CAMP for Amphibians of India (1998)	104	Rs. 325	28
29. CAMP for Reptiles of India (1998)	177	Rs. 425	29
30. CAMP for Mammals of India (1998)	178	Rs. 375	30
31. CAMP for Mangroves of India (1998)	108	Rs. 325	31
32. CAMP for Freshwater Fishes of India (1998)	158	Rs. 375	32
33. CAMP for Non-timber Forest Products of Madhya Pradesh (1998)	105	Rs. 225	33
34. CAMP for Amphibians and selected taxa of Reptiles of Sri Lanka (2000)	237	Rs. 400	34
35. CAMP for Non-timber forest products of Nilgiri biosphere reserve (2001)	107	Rs. 225	35
36. CAMP for Endemic Orchids of the Western Ghats (2001)	187	Rs. 250	36
37. CAMP for Status of South Asian Chiroptera including a CD Rom (2002)	151	Rs. 350	37
38. CAMP for Status and Red List of Pakistan's Mammals (2003)	309	Rs. 525	38
39. CAMP for Status of South Asian Primates (2003)	432	Rs. 750	39
40. CAMP for Status of South Asian Non-volant Small Mammals (2005)	618	Rs. 1000	40

Name:

Send Cheque/MO/DD, etc. to:

Address:

ZOO OUTREACH ORGANISATION
 PB. 1683, Peelamedu, Coimbatore 641 004, Tamil Nadu, India
 If you paying by out-station Cheque add Rs.50/-

Details of Cheque/ DD Amount Rs.

Date:

Cheque /DD No.

Bank

Signature:

Details of M.O.