

**VISCERAL GOUT IN A WHITE-BACKED VULTURE *GYPs BENGALENSIS***

**S.K. Panda, I. Nath, S.K. Rath, B. Tripathy, N. Sahoo and A.K. Mishra**

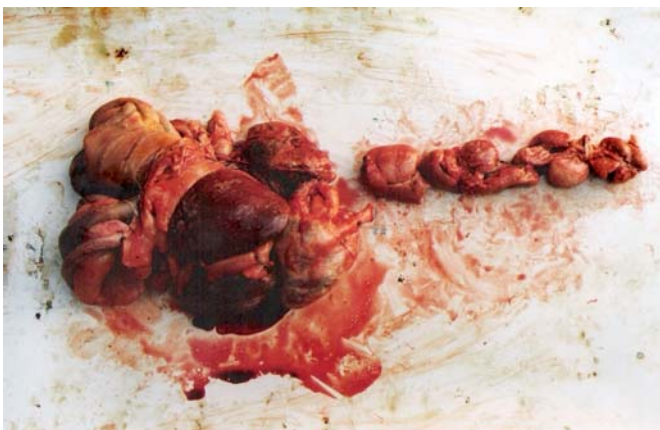
*Main article in Zoos' Print Journal 22(6): 2738; Manuscript 1622; ©Zoo Outreach Organisation; www.zoosprint.org*



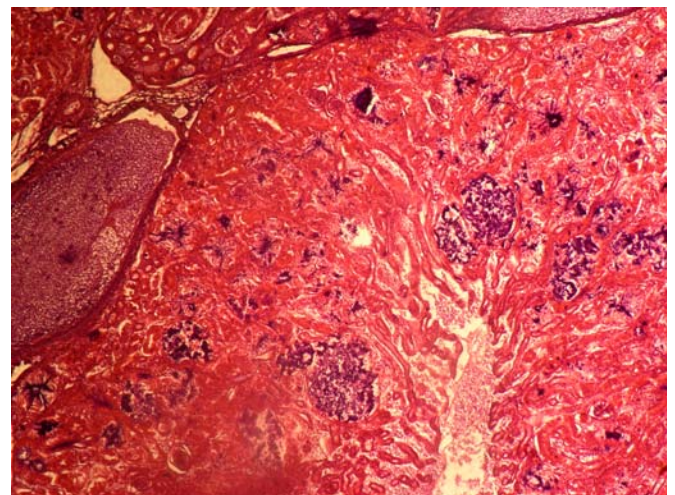
**Image 1.** *Gyps bengalensis*



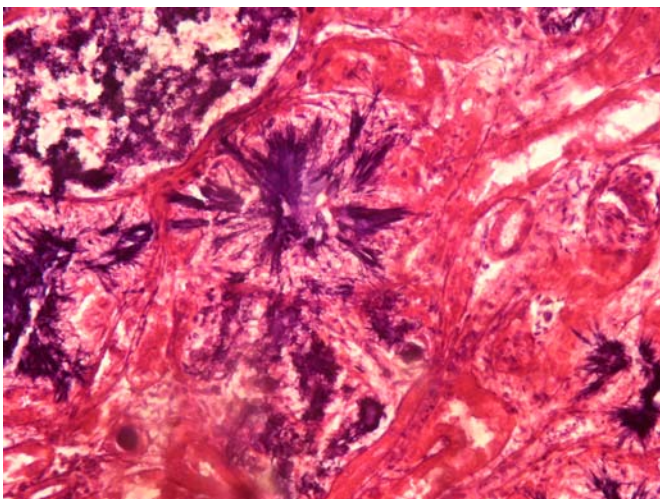
**Image 2.** *Urate crystals on all visceral surface*



**Image 3.** *Urate crystals on pericardium and visceral surface of liver*



**Image 4.** *Photomicrograph of kidney showing presence of urate tophi with marked congestion. H&Ex128.*



**Image 5.** *Photomicrograph showing the presence of urate tophi arranged in radiating manner. H&Ex240.*

