

BUTTERFLY FAUNA OF MELGHAT REGION, MAHARASHTRA
Mamata Chandrakar, Sachin Palekar and Sangita Chandrakar

Main article in Zoos' Print Journal 22(7): 2762-2764; Manuscript 1479; ©Zoo Outreach Organisation; www.zoosprint.org



Papithysa nomius nomius
Esper
Family: Papilionidae



Papilio protenor protenor
Cramer
Family: Papilionidae



Papilio polytes romulus
Cramer
Family: Papilionidae



Papilio demoleus demoleus
Linnaeus
Family: Papilionidae



Pachilopta jophon pandiyana
Moore
Family: Papilionidae



Pachilopta hector *Linnaeus*
Family: Papilionidae



Pachilopta aristolochiae
aristolochiae *Fabricus*
Family: Papilionidae



Graphium sarpedon
teredon *Felde & Felder*
Family: Papilionidae



Graphium agamemnon
menides *Felder & Felder*
Family: Papilionidae



Belenois aurota aurota
Fabricus
Family: Pieridae



Cepora nerissa nerissa
Fabricus
Family: Pieridae



Delias eucharis *Drury*
Family: Pieridae



Appias albina *Boisduval*
Family: Pieridae



Hebomoia glaucippe
Linnaeus
Family: Pieridae



Pareronia valeria *Cramer*
Family: Pieridae



Ixias marianne *Cramer*
Family: Pieridae



Ixia pyrene sesia *Fabricus*
Family: Pieridae



Catopsilia pomona *Fabricus*
Family: Pieridae



Catopsilia pyranthe pyranthe
Linnaeus
Family: Pieridae



Terias brigitta rubella
Stoll
Family: Pieridae



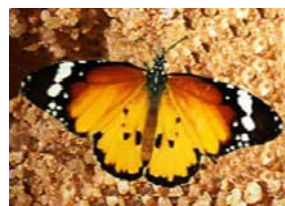
Terias hecabe simulata
Moore
Family: Pieridae



Terias laeta laeta *Boisduval*
Family: Pieridae



Terias blanda silhetana
Wallace
Family: Pieridae



Danaus chrysippus chrysippus
Linnaeus
Family: Danaidae



Danaus genutia
genutia
Family: Danaidae



Parantica aglea aglea
Stoll
Family: Danaidae



Tirumala limniace Cramer
Family: Danaidae



Euploea core core Cramer
Family: Danaidae



Melanitis leda leda Linnaeus
Family: Satyridae



Melanitis phedima bela Moore
Family: Satyridae



Mycalesis perseus tabitha
Fabricus
Family: Satyridae



Lethe confusa aurivillius
Fabricus
Family: Satyridae



Ypthima huebneri Kirby
Family: Satyridae



Ariadne ariadne Linnaeus
Family: Nymphalidae



Cynthia cardui Linnaeus
Family: Nymphalidae



Precis iphita iphita
Cramer
Family: Nymphalidae



Junonia almana almana
Linnaeus
Family: Nymphalidae



Junonia hierta hierta
Fabricus
Family: Nymphalidae



Junonia lemonias lemonias
Linnaeus
Family: Nymphalidae



Junonia orithya
Linnaeus
Family: Nymphalidae



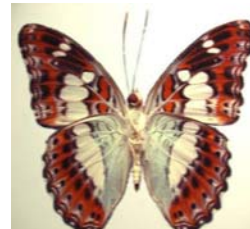
Hypolimnas bolina Linnaeus
Family: Nymphalidae



Hypolimnas misippus
Linnaeus
Family: Nymphalidae



Neptis hylas Linnaeus
Family: Nymphalidae



Moduza procris Cramer
Family: Nymphalidae



Acraea terpsicore Linnaeus
Family: Nymphalidae



Catochryops strabo
Fabricus
Family: Lycaenidae



Lampides boeticus
Linnaeus
Family: Lycaenidae



Pseudozizeeria maha
Kollar
Family: Lycaenidae



Euchrysops cnejus
Fabricus
Family: Lycaenidae



Chilades laius Stoll
Family: Lycaenidae



Telicola ancilla *Marbille*
Family: Hesperidae

