

ECOLOGY OF *CAMPTOCERAS LINEATUM* BLANFORD (PULMONATA: BASOMMATOPHORA) STUDIED IN DEEPAR WETLAND OF ASSAM, INDIA AND A NOTE ON ITS EMBRYONIC DEVELOPMENT
Girindra Kalita and M.M. Goswami

Main article in Zoos' Print Journal 22(12): 2916-2919; Manuscript 1558; ©Zoo Outreach Organisation; www.zoosprint.org



Image 1. Two *Camptoceras lineatum* on their host plant



Image 2. Ventral view of a *Camptoceras lineatum* shell.

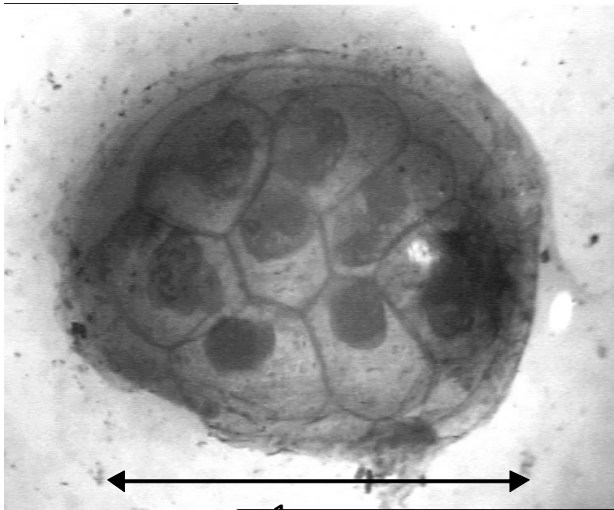


Image 3. Cluster of eggs of *Camptoceras lineatum* along with developing embryos (72 hours)



Image 4. *Camptoceras lineatum* outside the egg sac just after hatching (120 hours)



Images 5 & 6. Mature *Camptoceras lineatum* in life

