

LYMPHO SARCOMA IN A LEOPARD - A CASE REPORT K. Sujatha, Ch. Srilatha and N. Sailaja

Main article in *Zoos' Print Journal* 20(10): 2439; Manuscript 1502; ©Zoo Outreach Organisation; www.zoosprint.org



Image 1. Enlarged mesenteric lymphnodes



Image 2. Diffuse enlargement of spleen (15 to 20 times)

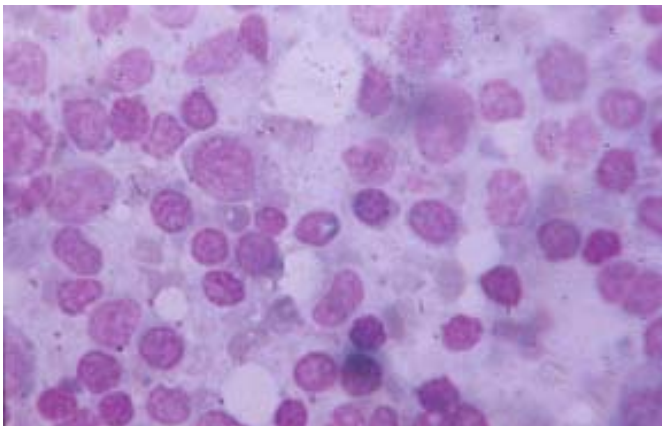


Image 3. Lymphnode: Note monomorphic population of medium sized lymphocytes with hyperchromatia nucleus in lymph nodes impression smears, leishman stain x700

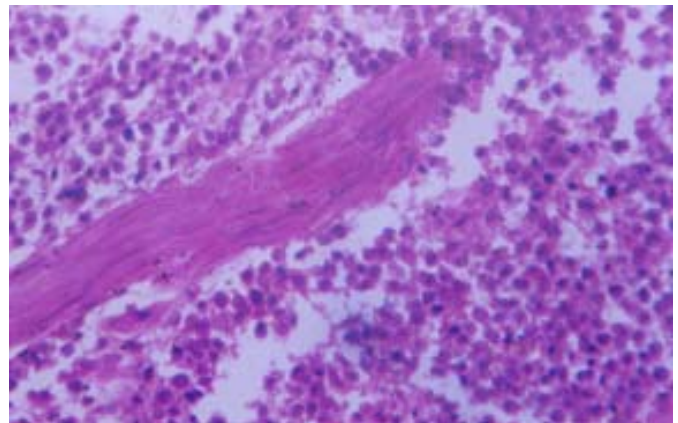


Image 4. Spleen: section showing broad sheets of lymphoblasts with anaplastic changes. H & E x280.

