

**Fauna of Protected Areas - 28:
ADDITIONS TO THE MANTID FAUNA (INSECTA: MANTODEA) OF PENCH NATIONAL PARK, MAHARASHTRA,
INDIA**

S.S. Jadhav, P.M. Sureshan and H.V. Ghate

Main article in Zoos' Print Journal 21(5): 2261-2262; Manuscript 1474; © Zoo Outreach Organisation; www.zoosprint.org

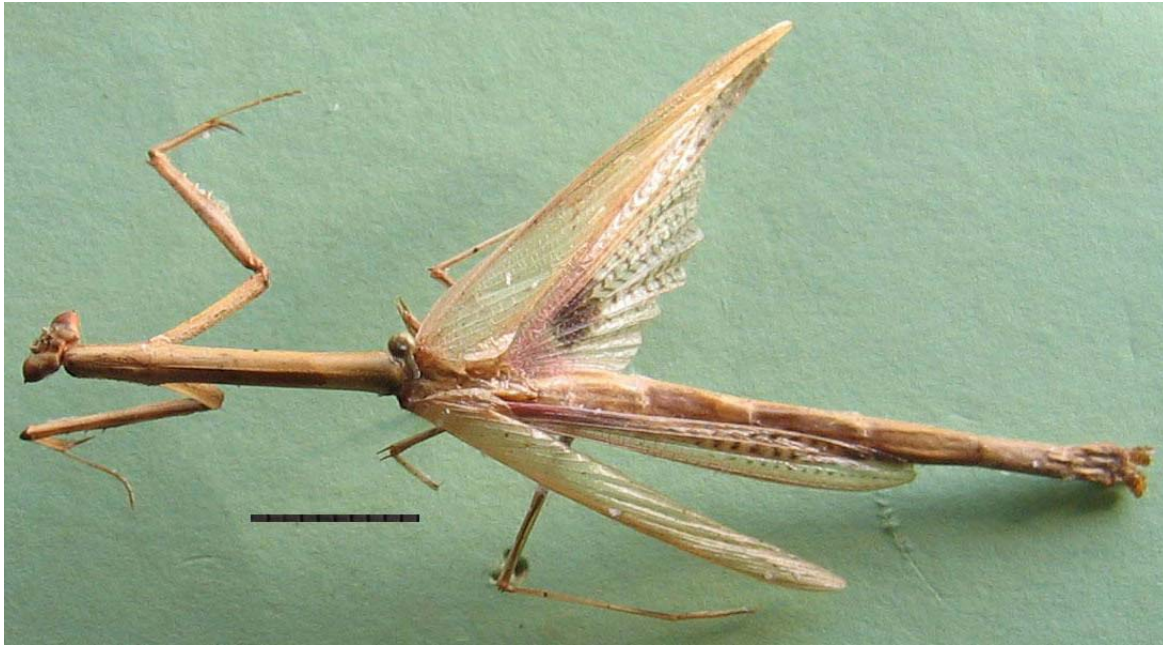


Image 1. Dorsal view of Cheddikulama straminea. Note typical eyes and head. Scale = 1cm.

