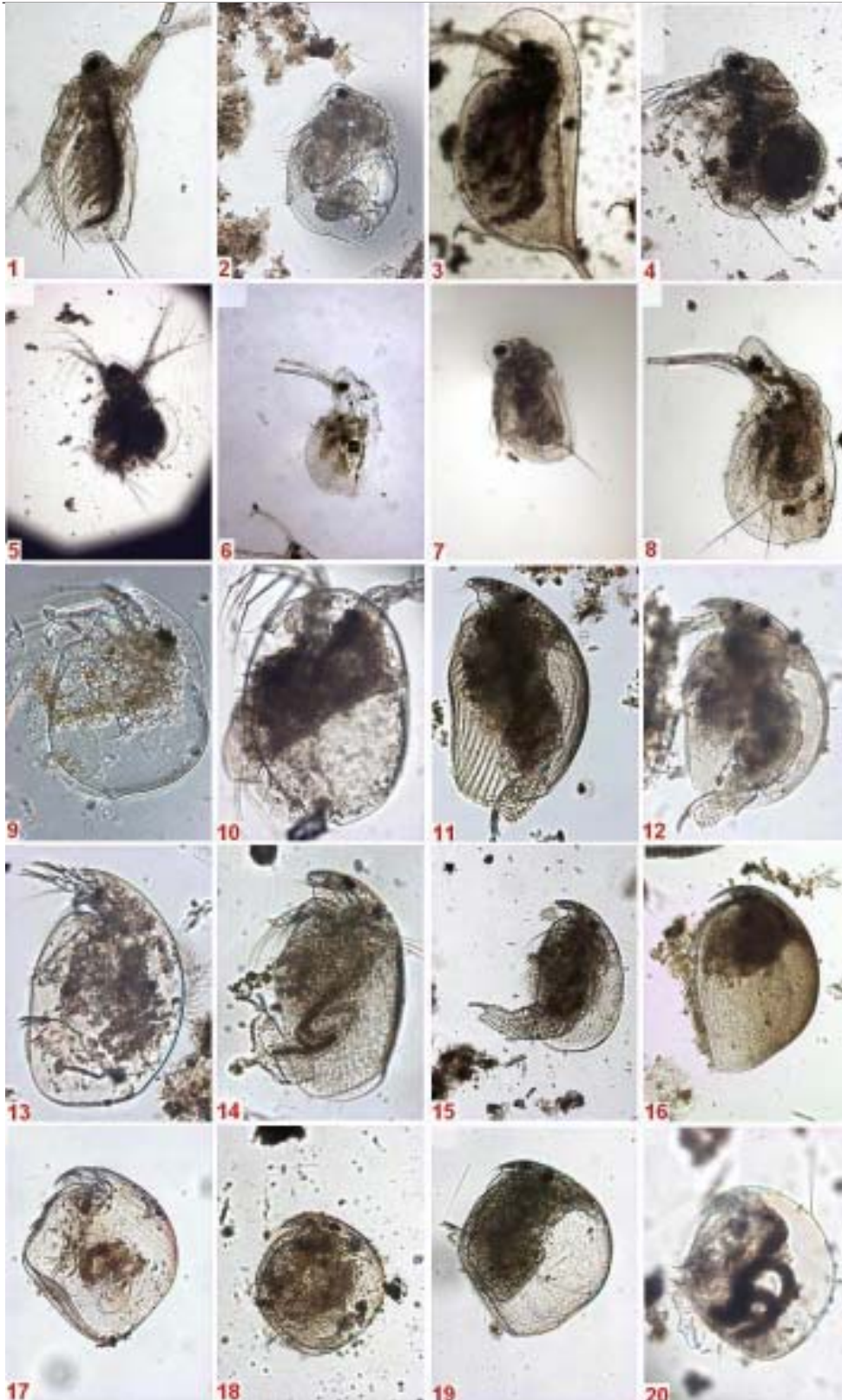


ZOOPLANKTON COMPOSITION IN SOME PONDS OF HAVERI DISTRICT

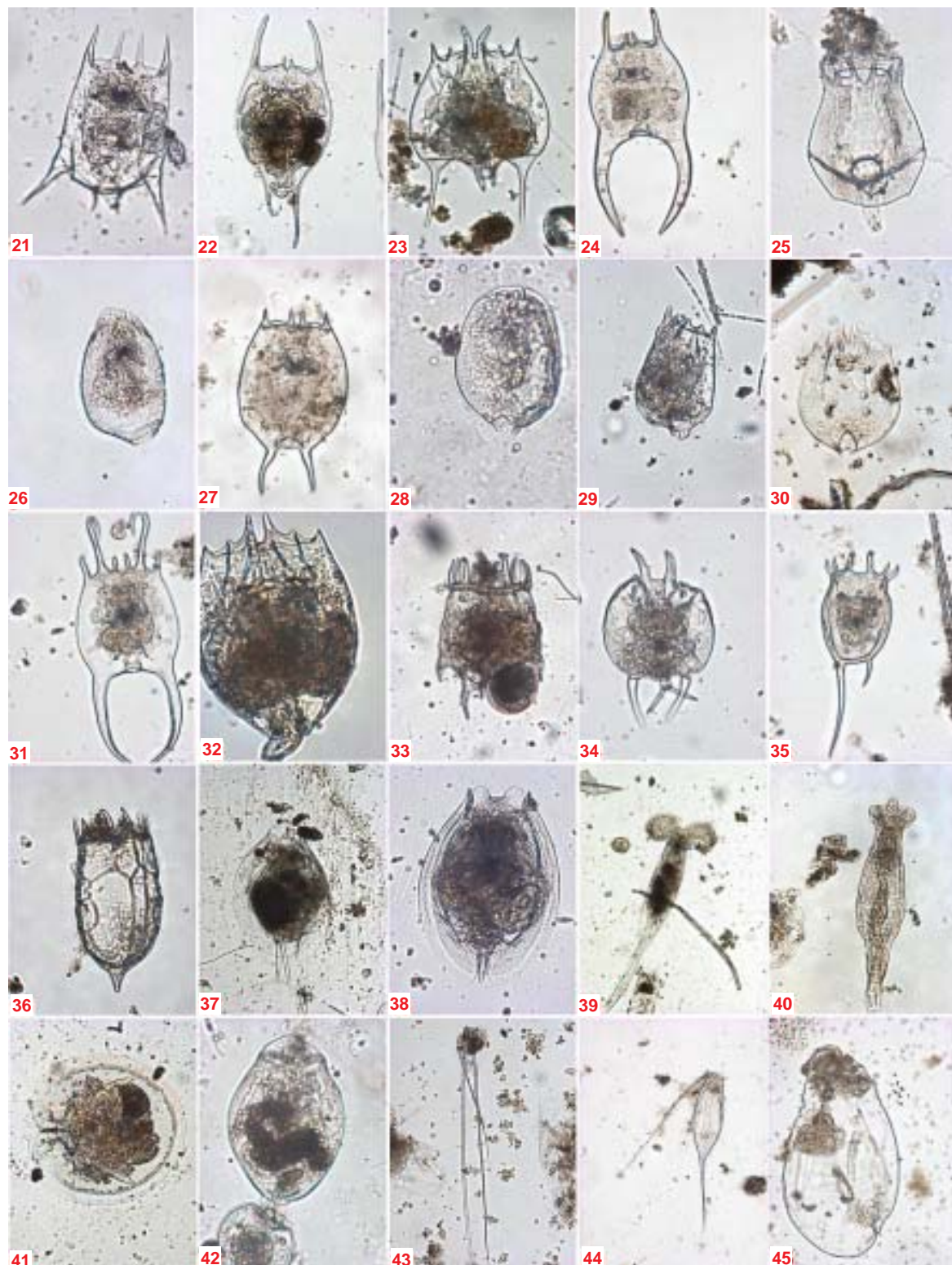
V.A. Kudari, G.G. Kadadevaru and R.D. Kanamadi

Main article in Zoos' Print Journal 20(12) 2094-2099; Manuscript 1380; © Zoo Outreach Organisation; www.zoosprint.org



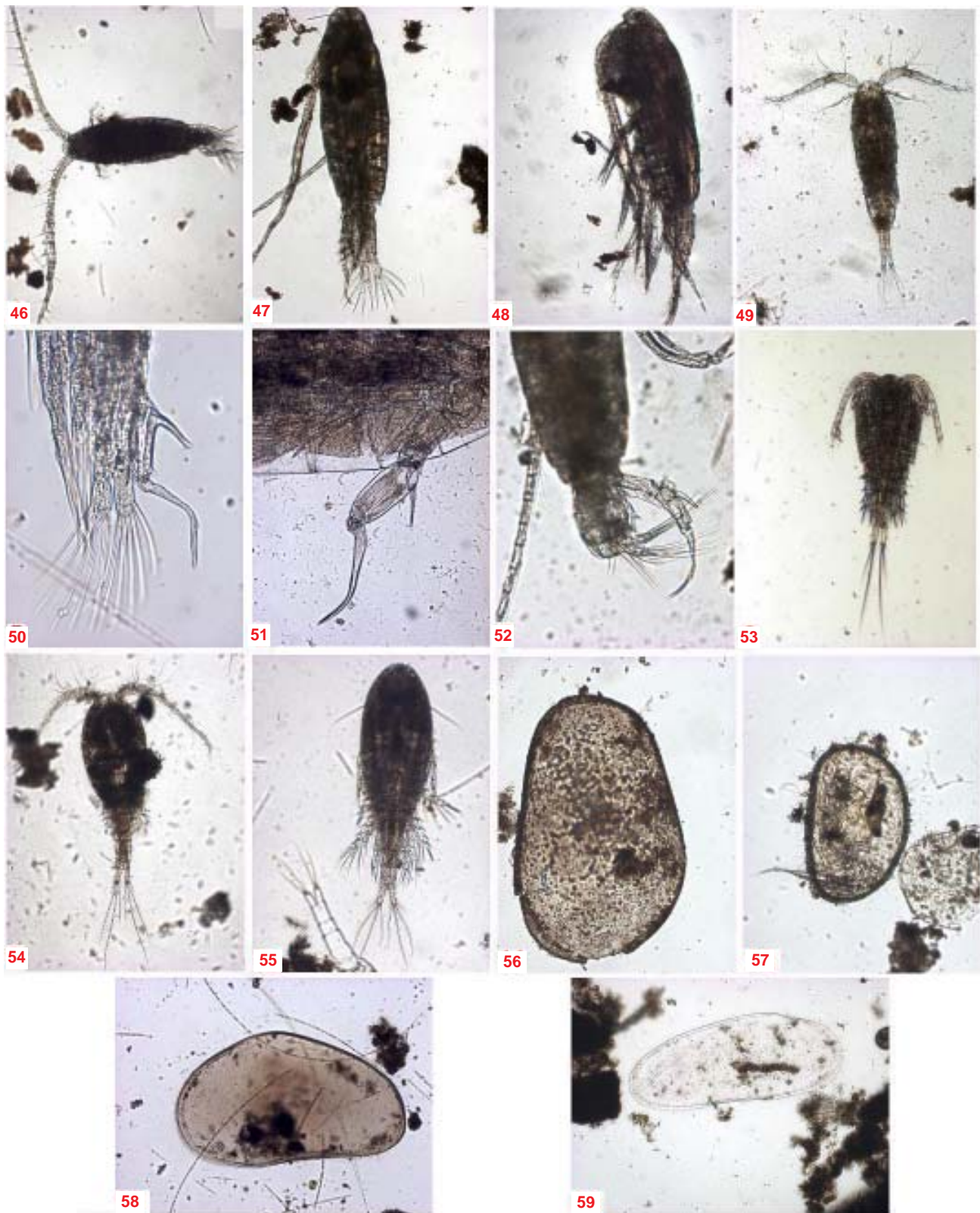
Images 1-20. Cladocerans of Haveri district

- 1 - *Diaphanosoma excisum*
- 2 - *Ceriodaphnia cornuta*
- 3 - *Daphnia carinata*
- 4 - *Moina brachiata*
- 5 - *Moina macracopa*
- 6 - *Moina rectirostris*
- 7 - *Moina micrura*
- 8 - *Moina oryzae*
- 9 - *Bosminopsis deitersi*
- 10 - *Macrothrix goeldi*
- 11 - *Leydiga acanthocercoides*
- 12 - *Alona pulchella*
- 13 - *Alona monocatha monocantha*
- 14 - *Alona cambouei*
- 15 - *Biapertura karua*
- 16 - *Pleuroxus trigonellus*
- 17 - *Pleuroxus denticulatus*
- 18 - *Chydorus sphaericus*
- 19 - *Chydorus reticulatus*
- 20 - *Chydorus barrosi barrosi*



Images 21-45. Rotiferans of Haveri district

- 21 - *Brachionus calyciflorus*; 22 - *Brachionus diversicornis*; 23 - *Brachionus quadridentatus*; 24 - *Brachionus forficula*; 25 - *Brachionusbidentata*; 26 - *Brachionus urceolaris*; 27 - *Brachionus caudatus*; 28 - *Brachionus angularis*; 29 - *Brachionus plicatilis*; 30 - *Brachionus rubens*; 31 - *Brachionus falcatus*; 32 - *Brachionus bennini*; 33 - *Platylas putulus*; 34 - *Platylas quadricornis*; 35 - *Keratella tropica*; 36 - *Keratella cochlearis*; 37 - *Euchlanis triquetra*; 38 - *Euchlanis dialata*; 39 - *Lacinularis socialis*; 40 - *Rotifer tartus*; 41 - *Testudinella patina*; 42 - *Pompholyx sulcata*; 43 - *Fillinia longiseta*; 44 - *Fillinia opoliensis*; 45 - *Asplanchna priodanta*.



Images 46-59. Copepodans and Ostracodans of Haveri district

- 46 - *Rhinediaptomus indicus*; 47 - *Heliodiaptomus viduus*; 48 - *Neodiaptomus stregilipes*; 49 - *Tropocyclops prasinus*;
 50 - P_5 of male *Rhinediaptomus indicus*; 51 - P_5 of male *Heliodiaptomus viduus*; 52 - P_5 of male *Neodiaptomus stregilipes*;
 53 - *Paracyclops fimbriatus*; 54 - *Mesocyclops leuckarti*; 55 - *Mesocyclops hyalinus*; 56 - *Iloyocypris gibba*;
 57 - *Darwinia* sp; 58 - *Hemicypris fossulata*; 59 - *Stenocypris hislopi*

