

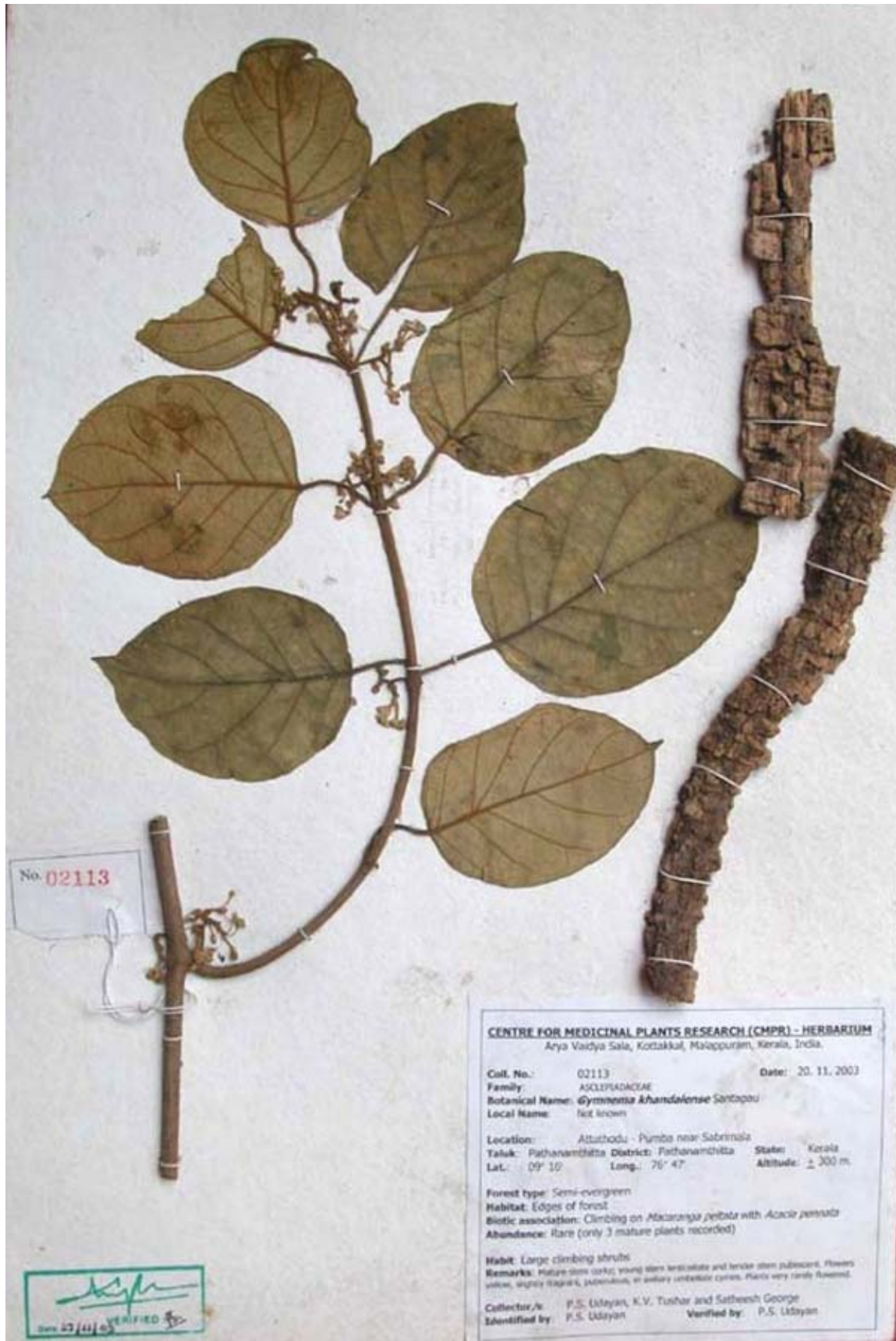
GYMNEMA KHANDALENSE SANTAPAU – A RARE AND LITTLE KNOWN ENDEMIC RED LISTED MEDICINAL PLANT FROM NILAKKAL FOREST, KERALA

P.S. Udayan, K.V. Tushar, Satheesh George and Indira Balachandran

Main article in Zoos' Print Journal 19(9): 1623-1624; Manuscript 1179; © Zoo Outreach Organisation; www.zoosprint.org



Image 1. *Gymnema khandalense Santapau*
A - Habit; B - Inflorescence; C - Bark; D - Flower; E - Corolla split open; F - Petal; G - Sepal;
H - Gynostegium (inset: pollinia)



**Image 2. *Gymnema khandalense* Santapau.
Specimen #02113 at the Centre for Medicinal Plants Research (CMPR) Herbarium, Kottakkal**

